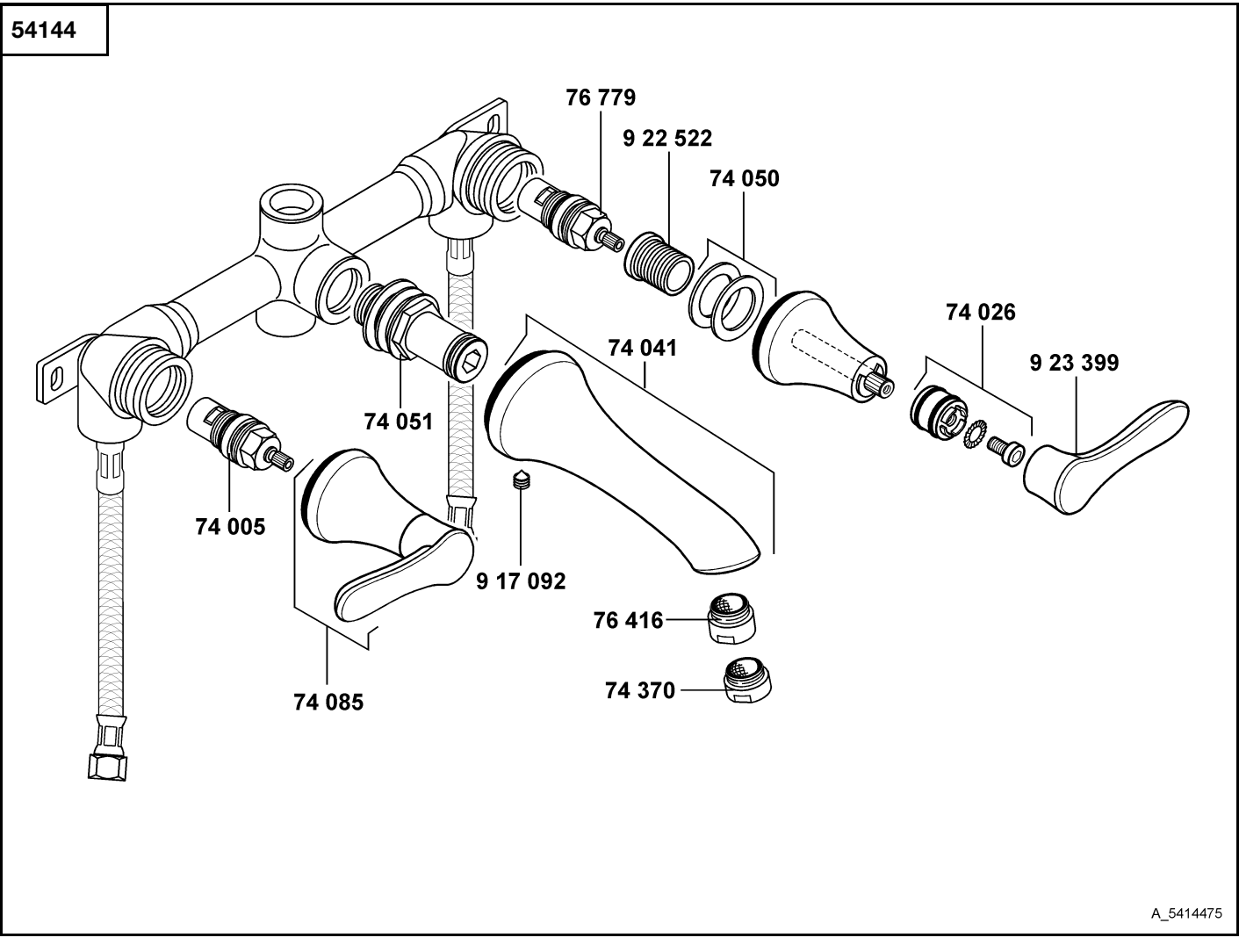


KLUDI AMPHORA



A_5414475

54144	Waschtisch-Wandarmatur DN 10	wall mounted basin mixer DN 10	wastafel wandmengkraan 3/8"
	74 005 Keramik-Oberteil G 1/2, 90°	ceramic headpart G 1/2, 90°	keramisch bovendeel G 1/2, 90°
	74 026 Griffbefestigung	fastening set for handle	greepbevestiging
	74 041 Auslauf KLUDI AMPHORA	spout KLUDI AMPHORA	uitloop KLUDI AMPHORA
	74 050 Griffbefestigung	fastening set for handle	greepbevestiging
	74 051 Wandanschluss	wall connector	wandaansluiting
	74 085 Hebel vormontiert	lever preassembled	hendel voormonteerd
	74 370 s-pointer Luftsprudler M 24 x 1	s-pointer aerator M 24 x 1	s-pointer perlator M 24 x 1
	76 416 Cascade-Luftsprudler M 24 x 1/A	cascade aerator M 24 x 1/A	Cascade-perlator M 24 x 1/A
	76 779 Keramik-Oberteil G 1/2, 90°	ceramic headpart G 1/2, 90°	keramisch bovendeel G 1/2, 90°
	917 092 Auslaufbefestigungsschraube	fastening screw for spout	bev. schroef voor uitloop
	922 522 UP-Verlängerungshülse	concealed extension	inbouw verlenghuls
	923 399 Hebel, KLUDI AMPHORA	lever, KLUDI AMPHORA	hendel, KLUDI AMPHORA